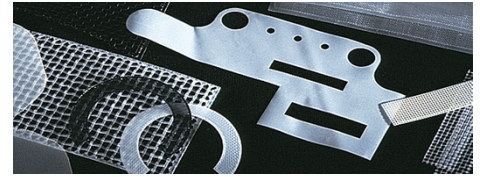


## Shapes, stamped pieces

Our shapes and stamped pieces are used in a variety of applications in following industries:  
automotive, healthcare, industrial appliance, household appliance



### Product Features

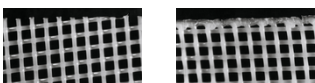
#### Shapes, stamped pieces

Stamped pieces are convenient for insert molding and are made from Sefar fabrics by a cold, laser or ultrasonic stamping process.

Using state-of-the-art laser and ultrasonic punching equipment, SEFAR MEDIFAB® and SEFAR MEDITEX® solutions can be tailored to virtually any shape or dimension. Laser cut parts can be produced in multiple layers. The high-precision laser cut parts are characterized by high edge quality. Laser cutting allows for elaborate shapes to be cut that are specific to the customer's design needs. Small parts can be produced on dispenser tape. This guarantees a high quality during transport and storage and often also simplifies further processing (e.g. pick and place)

### DOWNLOADS

### Product forms



#### Referenzen



- Cold stamping is the most economical process and provides standard-tolerance pieces with edges that are not sealed. Cold stamping is possible for all fabrics. Piece dimensions range up to 1000 x 1000 mm
- Laser stamping provides a heat-sealed edge.

#### Sefar SA de CV

Carretera Tepotzotlán la Aurora Km .1  
Nave 3 Módulo "A" S/Número  
Col: Axotlán  
Cuautitlán Izcalli, Edo de México  
C.P. 54719

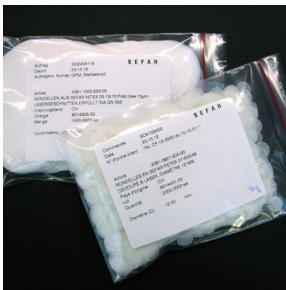
Phone +52 55 5899 6100  
Fax +52 55 5899 6129

[info.mexico@sefar.com](mailto:info.mexico@sefar.com)

[Go to product page](#)

- Maximum dimensions are 480 x 480 mm
- Ultrasonic stamping is available for fabrics having mesh openings < 400 µm. It ensures tight tolerances and provides high-quality sealed edges which do not fray
- Stamped discs with a diameter range of 6 to 95 mm are possible. Multilayer pieces are possible

## Packaging / Labeling



- Stamped pieces are packed into sealed PE bags
- Stamped pieces made of SEFAR MEDIFAB fabrics are double bagged
- The label contains the following standard information:  
 manufacturer, material, outer dimensions,  
 manufacturing date, order number, batch number
- If it is packed according to medical standards (double-layer packaging), the label is attached to the inner bag

### Sefar SA de CV

Carretera Tepotzotlán la Aurora Km .1  
 Nave 3 Módulo "A" S/Número  
 Col: Axotlán  
 Cuautitlán Izcalli, Edo de México  
 C.P. 54719

Phone +52 55 5899 6100  
 Fax +52 55 5899 6129

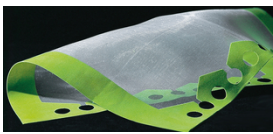
[info.mexico@sefar.com](mailto:info.mexico@sefar.com)

[Go to product page](#)

**Your Benefits**

- Almost unlimited range of shapes (various technologies)
- Suited for healthcare applications (SEFAR MEDIFAB, double bag)
- Traceability (label)
- Non-fraying edges (depending on selected technology)

For industry/application specific use please see links below:



For further information and fabric samples, please select the preferred contact option on the right.

**Locations**



**Sefar SA de CV**

Carretera Tepetzotlán la Aurora Km .1  
 Nave 3 Módulo "A" S/Número  
 Col: Axotlán  
 Cuautitlán Izcalli, Edo de México  
 C.P. 54719  
 Phone: +52 55 5899 6100  
 Fax: +52 55 5899 6129

■ **E-Mail**

**Sefar SA de CV**

Carretera Tepetzotlán la Aurora Km .1  
 Nave 3 Módulo "A" S/Número  
 Col: Axotlán  
 Cuautitlán Izcalli, Edo de México  
 C.P. 54719

Phone +52 55 5899 6100  
 Fax +52 55 5899 6129

[info.mexico@sefar.com](mailto:info.mexico@sefar.com)

[Go to product page](#)



**Sefar SA de CV**

Serigrafía  
Antonio I. Villarreal N° 2323 Norte  
Col. Moderna  
Monterrey, Nuevo León  
C.P. 64530  
Phone: +52 81 8345 8164  
Fax:

■ E-Mail

**Sefar SA de CV**

Carretera Tepetzotlán la Aurora Km .1  
Nave 3 Módulo "A" S/Número  
Col: Axotlán  
Cuautitlán Izcalli, Edo de México  
C.P. 54719

Phone +52 55 5899 6100  
Fax +52 55 5899 6129

[info.mexico@sefar.com](mailto:info.mexico@sefar.com)

[Go to product page](#)