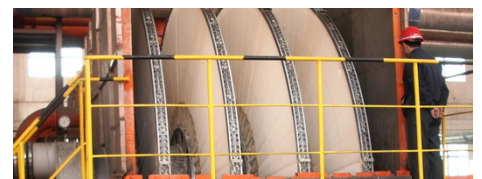
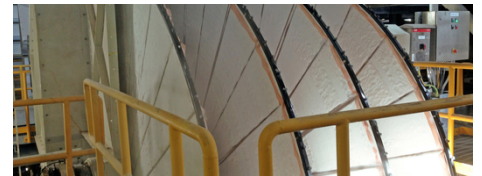


Rotary Disc Filter Covers

Our ready-to-use covers for rotary vacuum disc and hyperbaric rotary disc filter segments are customized and adapted to the needs of this filter type.

Sefar filter solutions deliver outstanding performance in terms of separation efficiency, residual cake moisture, cake release and abrasion resistance. By using Sefar filter solutions, downtime due to filter cloth change is reduced to the minimum.



Product Features

Sefar Filter Solutions for Rotary Disc Filters

Sefar offers ready to use, easy to install and perfectly fitting disc filter segment covers for vacuum and hyperbaric operated rotary disc filters. The filters are found in a wide range of solid-liquid separation processes.

DOWNLOADS

Brochure: Process Filtration (PDF 5300 kb)

Fabrication solutions

Covers for rotary disc filter segments are available in a wide range of materials and pore sizes to fit the large range of applications. We offer different designs equipped with special zipper or velcro closures as well as edge reinforcement and dedicated sealing to ensure highest possible vacuum levels.

Fabrication

Perfect fitting on the segments



Sefar SA de CV

Carretera Tepotzotlán la Aurora Km .1
Nave 3 Módulo "A" S/Número
Col: Axotlán
Cuautitlán Izcalli, Edo de México
C.P. 54719

Phone +52 55 5899 6100
Fax +52 55 5899 6129

info.mexico@sefar.com

[Go to product page](#)

Edge reinforcement

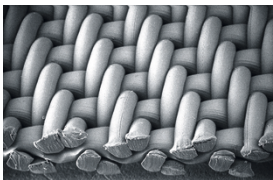


Filter media technology

The SEFAR **TETEX** line comprises a complete range of monofilament, multifilament and mixed mono-/multifilament fabrics.

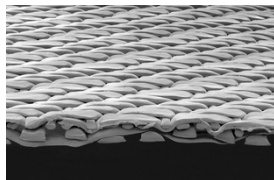
SEFAR **TETEX** fabrics all have uniformly distributed pores and a smooth surface as a result of special fabric finishing. Monofilament fabrics deliver outstanding filtration results. They do not clog during filtration and can be cleaned easily. Multifilament fabrics are used especially for their ability to retain very fine particles, as well as, their mechanical resistance. The mixed monofilament and multifilament mesh combine several of their most useful properties.

Monofilament fabric



■ For maximum permeability and

Double-layer fabric



■ For maximum lifetime and best filtration

Sefar SA de CV

Carretera Tepotzotlán la Aurora Km .1
 Nave 3 Módulo "A" S/Número
 Col: Axotlán
 Cuautitlán Izcalli, Edo de México
 C.P. 54719

Phone +52 55 5899 6100
 Fax +52 55 5899 6129

info.mexico@sefar.com

[Go to product page](#)

■ optimal cleaning

■ performance

properties



CONTACT

- Local contact
- Contact form
- Send mail

Please call us for further information:
Phone CH: +41 71 898 5700

Locations



Sefar SA de CV

Carretera Tepetzotlán la Aurora Km .1
Nave 3 Módulo "A" S/Número
Col: Axotlán
Cuautitlán Izcalli, Edo de México
C.P. 54719
Phone: +52 55 5899 6100
Fax: +52 55 5899 6129

■ E-Mail

Sefar SA de CV

Carretera Tepetzotlán la Aurora Km .1
Nave 3 Módulo "A" S/Número
Col: Axotlán
Cuautitlán Izcalli, Edo de México
C.P. 54719

Phone +52 55 5899 6100
Fax +52 55 5899 6129

info.mexico@sefar.com

[Go to product page](#)



Sefar SA de CV

Serigrafía
Antonio I. Villarreal N° 2323 Norte
Col. Moderna
Phone: +52 81 8345 8164
Fax:

■ E-Mail

Sefar SA de CV

Carretera Tepetzotlán la Aurora Km .1
Nave 3 Módulo "A" S/Número
Col: Axotlán
Cuautitlán Izcalli, Edo de México
C.P. 54719

Phone +52 55 5899 6100
Fax +52 55 5899 6129

info.mexico@sefar.com

[Go to product page](#)