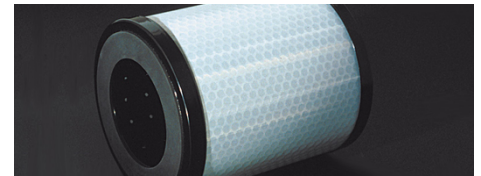


Fabric solutions for the Aerospace industry

Tightly controlled production processes guarantee the precise fabric properties you expect from Sefar's products. Sefar's manufacturing is known for providing lot-to-lot repeatability of critical parameters.



DOWNLOADS

Customer Info: Aerospace Industry (PDF
343 kb)

Product Features

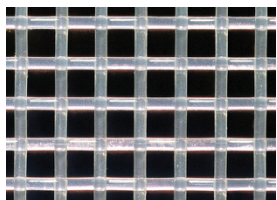
Material features

Sefar offers a wide range of filtration media and highly industrialized fabrication capabilities.

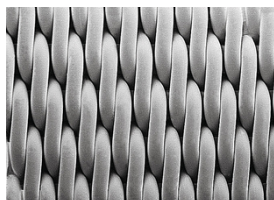
Inherent to our synthetic materials are:

- Good fatigue properties compared to metal mesh
- Easy to handle and no sharp edges
- High strength and tear resistance
- Non-shedding properties

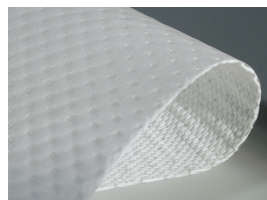
Open mesh fabric



Closed mesh fabric



Depth filter material



Sefar SA de CV

Carretera Tepotzotlán la Aurora Km .1
Nave 3 Módulo "A" S/Número
Col: Axotlán
Cuautitlán Izcalli, Edo de México
C.P. 54719

Phone +52 55 5899 6100
Fax +52 55 5899 6129

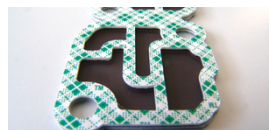
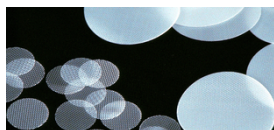
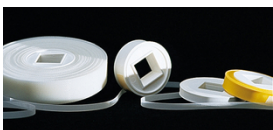
info.mexico@sefar.com

[Go to content](#)

- High precision and reliable mesh opening
- Low pressure drop
- Various surface modifications available
- High performance polymers for extreme and harsh conditions
- Highly efficient particle retention
- High throughput
- Excellent surface properties
- Highly efficient particle retention
- Low pressure drop
- Resistant to corrosion caused by fuels and blends
- Maximized filtration area
- State-of-the-art bonding technology

Fabrication & Converting Solutions

Information on our fabrication capabilities can be found by following the links below:



■ Customer specific

For further information please call us, we will also gladly send you fabric samples!

Sefar SA de CV

Carretera Tepetzotlán la Aurora Km .1
 Nave 3 Módulo "A" S/Número
 Col: Axotlán
 Cuautitlán Izcalli, Edo de México
 C.P. 54719

Phone +52 55 5899 6100
 Fax +52 55 5899 6129

info.mexico@sefar.com

[Go to content](#)

Locations**Sefar SA de CV**

Carretera Tepetzotlán la Aurora Km .1
Nave 3 Módulo "A" S/Número
Col: Axotlán
Cuautitlán Izcalli, Edo de México
C.P. 54719
Phone: +52 55 5899 6100
Fax: +52 55 5899 6129

■ E-Mail

**Sefar SA de CV**

Serigrafía
Antonio I. Villarreal N° 2323 Norte
Col. Moderna
Monterrey, Nuevo León
C.P. 64530
Phone: +52 81 8345 8164
Fax:

■ E-Mail

Sefar SA de CV

Carretera Tepetzotlán la Aurora Km .1
Nave 3 Módulo "A" S/Número
Col: Axotlán
Cuautitlán Izcalli, Edo de México
C.P. 54719

Phone +52 55 5899 6100
Fax +52 55 5899 6129

info.mexico@sefar.com

[Go to content](#)