

# Leaf Filter

Sefar is specialized in producing ready-to-use covers, integrating innovative solutions to increase lifetime and efficiency for new and older machines.

## Product Features

### Sefar filter solutions for Leaf Filters

For several decades, Sefar is the leading supplier of covers, bags and candles for all types of horizontal and vertical pressure and vacuum leaf filters, such as Cricket, Diastar, Kelly, Tamaris, Miningtech Moore, Outotec and others. Leaf filter bags are developed in close cooperation with leading equipment manufacturers as well as directly with end users, paying attention to the specific requirements of the filter equipment and separation application.

## Experience

Sefar proposes a large range of solutions to answer all the customer's requirements, such as:

- Chemical, mechanical and abrasive resistance
- Dimensional stability
- Resistance of the media against clogging, blinding or scaling, coupled with a high regeneration capacity\*  
(\*capacity of the woven fabric to recover the original permeability after a washing)
- High strength resistance against tearing
- For the food industry : FDA, EU 10/2011, EC 1935/2004, EC 2023/2006



## DOWNLOADS

Brochure: Process Filtration (PDF 5300 kb)

## Sefar SA de CV

Carretera Tepotzotlán la Aurora Km .1  
Nave 3 Módulo "A" S/Número  
Col: Axotlán  
Cuautitlán Izcalli, Edo de México  
C.P. 54719

Phone +52 55 5899 6100  
Fax +52 55 5899 6129

[info.mexico@sefar.com](mailto:info.mexico@sefar.com)

[Go to product page](#)

- compliance
- NEW: Filter media with unique anti-scaling properties, exclusively available through Sefar, called x-Scale, which delay the scaling in applications such as alumina pregnant liquor clarification (security filtration) with the target to keep the flow rate stable for a longer period of time and reduce the maintenance cycles

## Knowledge

For years, Sefar has continuously developed woven media with consideration for the specific needs of pressure leaf filters.

- Resistance to temperature > 100°C with the minimum of shrinkage
- Strong resistance for the maximum lifetime
- Productivity given by an optimum flow rate
- Cake moisture (cake dryness, moisture content)
- Cake thickness
- Filtration efficiency (filtrate clarity, solids in filtrate, particle retention, solids in suspension)
- Cake release (cake discharge)
- Cake washing efficiency

## Solutions

Sefar proposes solutions to cope with all customer frame or tube design, with ready-made and adapted filter housings, which match perfectly to any form of

### Sefar SA de CV

Carretera Tepotzotlán la Aurora Km .1  
Nave 3 Módulo "A" S/Número  
Col: Axotlán  
Cuautitlán Izcalli, Edo de México  
C.P. 54719

Phone +52 55 5899 6100  
Fax +52 55 5899 6129

[info.mexico@sefar.com](mailto:info.mexico@sefar.com)

[Go to product page](#)

the support (from round to square) but which can, moreover:

- prevent or delay some damage induced by cake recovery
- prevent or delay damage induced by frames in poor condition
- ensure the best seal possible between cover and support

### Innovation

To achieve this target, Sefar can offer standard and innovative solutions.

- Welding assembly is available to avoid any loss of product through the hole s created during sewing
- Reinforcement with high resistance against abrasion and compatible with difficult chemical environments and applied to the sensitive areas to protect the fabric, thereby improving lifetime
- NEW: Special top for Diastar bags, to avoid any scaling on top area and facilitate removal and consequently help to keep the material in good conditions.

### Fabrication solutions

Finished bags and covers for leaf filters from Sefar are equipped with options that significantly simplify the installation of the products. Most of our products have welded seams, which ensure minimal product loss since there are no stitching holes.

#### Sefar SA de CV

Carretera Tepotzotlán la Aurora Km .1  
Nave 3 Módulo "A" S/Número  
Col: Axotlán  
Cuautitlán Izcalli, Edo de México  
C.P. 54719

Phone +52 55 5899 6100  
Fax +52 55 5899 6129

[info.mexico@sefar.com](mailto:info.mexico@sefar.com)

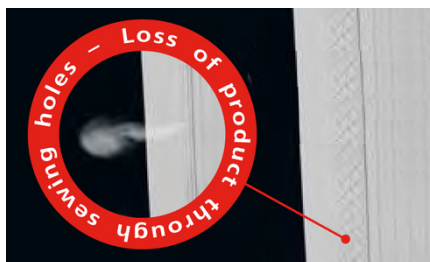
[Go to product page](#)

A newly developed closing system (patent pending), for the mineral industry especially, facilitates the installation of leaf filters which reduces operational expenses and the risk of leakages.

## Fabricated leaf filter bags



Optimal sealing design



No product loss using Sefar welding technology (no sewing holes)

Sefar has developed dedicated yarns and filter media to withstand strong alkaline process conditions at operating temperatures up to 110 degrees Celsius. Our multichannel bags feature highly uniform dimensions thanks to an automated fabrication process from cutting to welding and channel sewing on a special sewing automate. Special thread is used for sewing and a highest-class fabric allows for smooth installation and perfect tightness on the collector.

### Diastar filter installed on filtrate drainage system



### Diastar filter custom fabrication



### Diastar filter custom fabrication



#### Sefar SA de CV

Carretera Tepotzotlán la Aurora Km .1  
Nave 3 Módulo "A" S/Número  
Col: Axotlán  
Cuautitlán Izcalli, Edo de México  
C.P. 54719

Phone +52 55 5899 6100  
Fax +52 55 5899 6129

[info.mexico@sefar.com](mailto:info.mexico@sefar.com)

[Go to product page](#)

## Applications



### Food

Sugar, wheat starch slurry



### Chemicals

PTA, CTA, Boric acid

#### Sefar SA de CV

Carretera Tepotzotlán la Aurora Km .1  
Nave 3 Módulo "A" S/Número  
Col: Axotlán  
Cuautitlán Izcalli, Edo de México  
C.P. 54719

Phone +52 55 5899 6100  
Fax +52 55 5899 6129

[info.mexico@sefar.com](mailto:info.mexico@sefar.com)

[Go to product page](#)



### Minerals

Alumina security filtration (pregnant liquor clarification), nickel sulphide, titaniumdioxide

### Sefar filter solutions for OEM

Our products meet the specific needs of these filtration applications and are successfully running all over the world on all known leaf filter brands and OEMs, such as:

#### Sefar SA de CV

Carretera Tepotzotlán la Aurora Km .1  
Nave 3 Módulo "A" S/Número  
Col: Axotlán  
Cuautitlán Izcalli, Edo de México  
C.P. 54719

Phone +52 55 5899 6100  
Fax +52 55 5899 6129

[info.mexico@sefar.com](mailto:info.mexico@sefar.com)

[Go to product page](#)

Amafilter      Ascension      Choquet      Dorr Oliver

Durco      EDM      Gaudfrin      Goslin

Kafesi      L. B. Zhongxing Machines      Luoyang Nurui Machinery      Miningtech

Moore      Niagara      Norman      Outotec

Putsch      Scheibler      Sterlitech      US Filter

Westech

## Filter media technology

A complete range of fabrics, including monofilament (SEFAR TETEX MONO), multifilament (SEFAR TETEX MULTI), mixed mono-multifilament, and other innovative products, are especially dedicated to pressure leaf filters. Our range is able to cover all chemical requirements, with polymers such as Polypropylene (PP), Polyamide (PA, Nylon, Rilsan, PA6-6, PA 6, PA 6-10, PA11, PA12), Polyester (PET), combined with high particle retention and an optimum flow rate, moisture content, and cake washing properties.

For this line, all the media are:

### Sefar SA de CV

Carretera Tepotzotlán la Aurora Km .1  
Nave 3 Módulo "A" S/Número  
Col: Axotlán  
Cuautitlán Izcalli, Edo de México  
C.P. 54719

Phone +52 55 5899 6100  
Fax +52 55 5899 6129

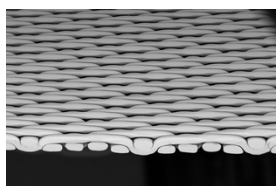
[info.mexico@sefar.com](mailto:info.mexico@sefar.com)

[Go to product page](#)

- calendered to provide the smooth surface needed for good cake release
- properly thermo-fixed to ensure dimensional stability

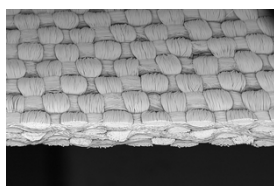
During this stage, the air permeability is monitored continuously to warrant uniformity and reliability and the pore size distribution of our line.

## Monofilament fabric



For good filtration performance and better cake discharge

## Multifilament fabric



For maximum particle retention and good mechanical resistance



## CONTACT

- Local contact
- Contact form
- Send mail

Please call us for further information:  
Phone CH: +41 71 898 5700

## Locations

### Sefar SA de CV

Carretera Tepotzotlán la Aurora Km .1  
Nave 3 Módulo "A" S/Número  
Col: Axotlán  
Cuautitlán Izcalli, Edo de México  
C.P. 54719

Phone +52 55 5899 6100  
Fax +52 55 5899 6129

[info.mexico@sefar.com](mailto:info.mexico@sefar.com)

[Go to product page](#)





#### **Sefar SA de CV**

Carretera Tepotzotlán la Aurora Km  
.1  
Nave 3 Módulo "A" S/Número  
Col: Axotlán  
Cuautitlán Izcalli, Edo de México  
C.P. 54719  
Phone: +52 55 5899 6100  
Fax: +52 55 5899 6129

 **E-Mail**



#### **Sefar SA de CV**

Serigrafía  
Antonio I. Villarreal N° 2323 Norte  
Col. Moderna  
Monterrey, Nuevo León  
C.P. 64530  
Phone: +52 81 8345 8164  
Fax:

 **E-Mail**

#### **Sefar SA de CV**

Carretera Tepotzotlán la Aurora Km .1  
Nave 3 Módulo "A" S/Número  
Col: Axotlán  
Cuautitlán Izcalli, Edo de México  
C.P. 54719

Phone +52 55 5899 6100  
Fax +52 55 5899 6129

[info.mexico@sefar.com](mailto:info.mexico@sefar.com)

[Go to product page](#)