

## Nutsche Filters

Sefar provides type-specific filter discs and bags for nutsche filters that meet the high standards of the pharmaceutical and chemical industry with regard to certification and traceability.



### Product Features

#### Sefar filter solutions for Nutsche Filter

Pressure Nutsche Filters are simple and proven filtration systems for solid-liquid separation of medium-sized batches on various filter media.

In the pharmaceutical and chemical industries, pressure filters and single-layer filters are used in a large variety of forms.

### DOWNLOADS

Brochure: Process Filtration (PDF 5300 kb)

#### Fabrication solutions

Sefar's filter discs are characterized by their precise fit and easy installation. The disc edges can be fabricated using laser cutting, hemmed or taped with reinforcement. In our wide range of filter materials (polypropylene, polyester, PEEK and PTFE fabric), we can supply you with the optimal solution for your application's chemical and thermal requirements. Special bag versions are available as customized solutions.

#### Unique marking

#### Customized bag version with flange



#### Sefar SA de CV

Carretera Tepetzotlán la Aurora Km .1  
 Nave 3 Módulo "A" S/Número  
 Col: Axotlán  
 Cuautitlán Izcalli, Edo de México  
 C.P. 54719

Phone +52 55 5899 6100  
 Fax +52 55 5899 6129

[info.mexico@sefar.com](mailto:info.mexico@sefar.com)

[Go to product page](#)

---

**Hemmed with cord**



---

**Sefar filter solutions for OEM**

Our products meet the specific needs of these filtration applications and are successfully running all over the world on all known nutsche filter brands and OEMs, such as:

---

Comber

Heinkel

Mavag AG

Waldner

---

Bachiller

Delta

---

**Filter media technology**

Sefar's **Double Layer Weave** technology combines fine filter fabric together with a rugged backing cloth.

**Sefar SA de CV**

Carretera Tepotzotlán la Aurora Km .1  
Nave 3 Módulo "A" S/Número  
Col: Axotlán  
Cuautitlán Izcalli, Edo de México  
C.P. 54719

Phone +52 55 5899 6100  
Fax +52 55 5899 6129

[info.mexico@sefar.com](mailto:info.mexico@sefar.com)

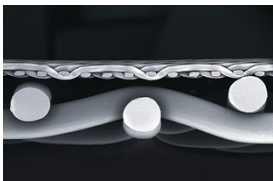
[Go to product page](#)

SEFAR **TETEX** DLW fabrics are produced in our European facilities to meet the highest quality requirements and offer these decisive advantages:

- Low downtime
- High product yield
- Ease of installation
- Excellent cake release
- Minimal product contamination

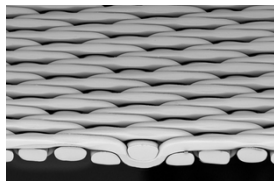
In addition to DLW fabrics, monofilament and multifilament fabrics are also available to ensure an optimal design.

**Double-layer fabric**



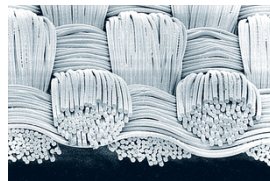
- With integrated backing cloth for excellent drainage and stability

**Monofilament fabric**



- For maximum permeability and optimal cleaning properties

**Multifilament fabric**



- For maximum particle retention, strength and cloth flexibility

**Specially made for life science industries**

Sefar controls every crucial production step from yarn production to the ready-to-use

**Sefar SA de CV**

Carretera Tepetzotlán la Aurora Km .1  
 Nave 3 Módulo "A" S/Número  
 Col: Axotlán  
 Cuautitlán Izcalli, Edo de México  
 C.P. 54719

Phone +52 55 5899 6100  
 Fax +52 55 5899 6129

[info.mexico@sefar.com](mailto:info.mexico@sefar.com)

[Go to product page](#)

filters making possible a complete traceability of all critical parts.  
 Our unique market position in **life science** enables us to supply products to our customers that meet all required quality levels and compliances.  
 Sefar has perfected its manufacturing processes to meet the needs of the pharmaceutical industry. Our exclusive GMP compliant filter products are manufactured in our cleanroom following strict GMP guidelines.



- EC 1935/2004
- EU 10/2011
- GMP EC 2023/2006 or cGMP
- FDA CFR 177
- ISO 9001
- Single packaging
- Customized marking
- Traceability



**Sefar SA de CV**

Carretera Tepotzotlán la Aurora Km .1  
 Nave 3 Módulo "A" S/Número  
 Col: Axotlán  
 Cuautitlán Izcalli, Edo de México  
 C.P. 54719

Phone +52 55 5899 6100  
 Fax +52 55 5899 6129

[info.mexico@sefar.com](mailto:info.mexico@sefar.com)

[Go to product page](#)



## CONTACT

- Local contact
- Contact form
- Send mail

Please call us for further information:  
Phone CH: +41 71 898 5700

## Locations



### Sefar SA de CV

Carretera Tepetzotlán la Aurora Km .1  
Nave 3 Módulo "A" S/Número  
Col: Axotlán  
Cuautitlán Izcalli, Edo de México  
C.P. 54719  
Phone: +52 55 5899 6100  
Fax: +52 55 5899 6129

[E-Mail](#)



### Sefar SA de CV

Serigrafía  
Antonio I. Villarreal N° 2323 Norte  
Col. Moderna  
Monterrey, Nuevo León  
C.P. 64530  
Phone: +52 81 8345 8164  
Fax:

[E-Mail](#)

### Sefar SA de CV

Carretera Tepetzotlán la Aurora Km .1  
Nave 3 Módulo "A" S/Número  
Col: Axotlán  
Cuautitlán Izcalli, Edo de México  
C.P. 54719

Phone +52 55 5899 6100  
Fax +52 55 5899 6129

[info.mexico@sefar.com](mailto:info.mexico@sefar.com)

[Go to product page](#)