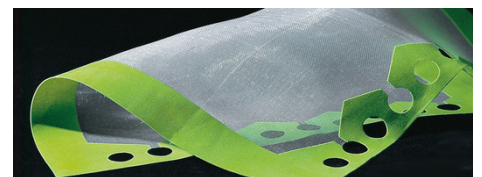
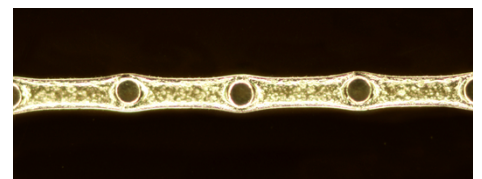
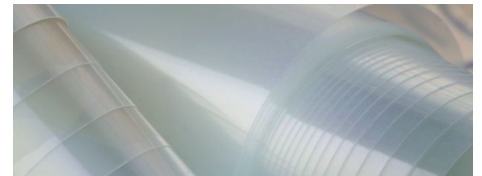
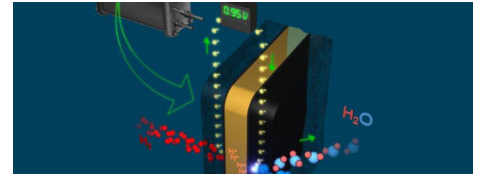


# Fabrics for Membrane Technology

Our wide range of specialized polymer products meets all the requirements of membrane filtration systems. We can thus provide for such major applications as: membrane support materials and spacers with integrated seals.



## Product Features

### Spacer and support materials

The mechanical properties of thin membranes can be improved dramatically by strengthening them through the use of a grid material integrated into the membrane itself.

Sefar's woven, non-shedding monofilament fabrics with large open area are the ideal reinforcement media; these add strength and reduce swelling of the membrane while allowing high throughput rates.

- PEEK and fluorinated products for chemically aggressive environments
  - or high temperature applications
- Excellent thickness uniformity
- Unique precision woven fabric geometry
- Several surface treatments for all fabric types
- Low to no extractables
- Wide range of mesh openings, thicknesses and materials
- Thinnest material available
- No sharp protrusions

### Spacers with integrated seals

- Custom-gasketed panels

#### Sefar SA de CV

Carretera Tepotzotlán la Aurora Km .1  
 Nave 3 Módulo "A" S/Número  
 Col: Axotlán  
 Cuautitlán Izcalli, Edo de México  
 C.P. 54719

Phone +52 55 5899 6100  
 Fax +52 55 5899 6129

[info.mexico@sefar.com](mailto:info.mexico@sefar.com)

[Go to product page](#)

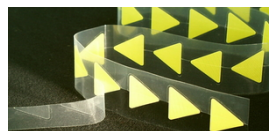
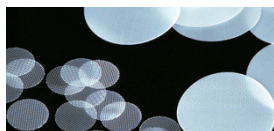
- Variety of thermoplastic films
- 

## Your Benefits

### Spacer materials and support

- More turbulence – less fouling (unique precision woven fabric geometry)
  - Reduced build-up of solids on the membrane surface (increased drainage due to three dimensional fabric structure)
  - No damage to membrane (smooth surface, uniform thickness and no extraneous particles)
  - Wide field of application (high performance fibers for temperature and chemical resistance)
  - Little resistance – high open area (maximized open area by use of unique thin yarn)
  - Improved adhesion between membrane and woven layer (different surface treatments)
- 

Additional information on our fabrication capabilities can be found by following the links below:



Please call us for further information. We will also gladly send you fabric samples!

### Sefar SA de CV

Carretera Tepotzotlán la Aurora Km .1  
Nave 3 Módulo "A" S/Número  
Col: Axotlán  
Cuautitlán Izcalli, Edo de México  
C.P. 54719

Phone +52 55 5899 6100  
Fax +52 55 5899 6129

[info.mexico@sefar.com](mailto:info.mexico@sefar.com)

[Go to product page](#)

Further details can also be found in the technical list 'SEFAR Open Mesh fabrics' under Downloads.

## Locations



### Sefar SA de CV

Carretera Tepetzotlán la Aurora Km .1  
Nave 3 Módulo "A" S/Número  
Col: Axotlán  
Cuautitlán Izcalli, Edo de México  
C.P. 54719  
Phone: +52 55 5899 6100  
Fax: +52 55 5899 6129

■ E-Mail



### Sefar SA de CV

Serigrafía  
Antonio I. Villarreal N° 2323 Norte  
Col. Moderna  
Monterrey, Nuevo León  
C.P. 64530  
Phone: +52 81 8345 8164  
Fax:

■ E-Mail

### Sefar SA de CV

Carretera Tepetzotlán la Aurora Km .1  
Nave 3 Módulo "A" S/Número  
Col: Axotlán  
Cuautitlán Izcalli, Edo de México  
C.P. 54719

Phone +52 55 5899 6100  
Fax +52 55 5899 6129

[info.mexico@sefar.com](mailto:info.mexico@sefar.com)

[Go to product page](#)