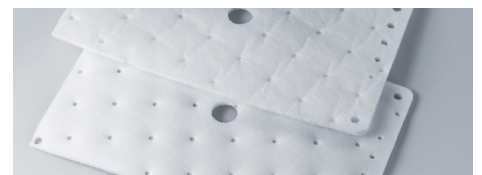


## Automotive filters

Automotive filters are designed to protect relevant mechanical and electronic components parts in the automotive sector. Sefar offers highly precise woven screens in monofilaments for applications such as security filters for valves, pumps and sensors. We can also supply depth filters where high dust holding capacity is needed.

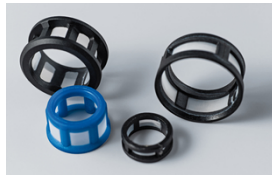


### Product Features

#### Injection Filter



#### Hydraulic Filter



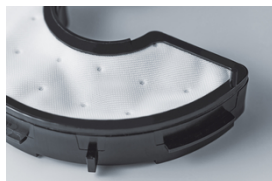
#### Water Filter



#### In-tank Filter



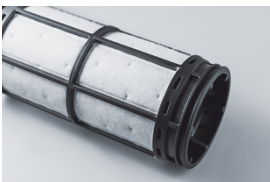
#### AdBlue Filter



#### Gear Filter



#### Diesel Filter



### DOWNLOADS

Brochure: Automotive (PDF 3464 kb)

Customer Info: SEFAR PEEKTEX Automotive (PDF 763 kb)

Flyer: SEFAR PowerHeat NT (PDF 231 kb)

Flyer: SEFAR VISION AM (PDF 992 kb)

### Sefar SA de CV

Carretera Tepotzotlán la Aurora Km .1  
Nave 3 Módulo "A" S/Número  
Col: Axotlán  
Cuautitlán Izcalli, Edo de México  
C.P. 54719

Phone +52 55 5899 6100  
Fax +52 55 5899 6129

[info.mexico@sefar.com](mailto:info.mexico@sefar.com)

[Go to product page](#)

## Injection filters

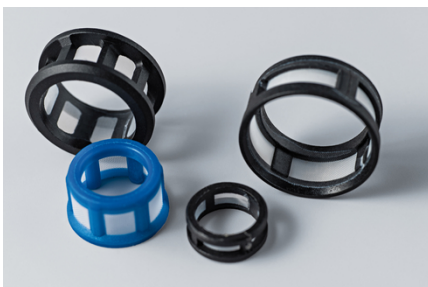
For fuel, CNG and AdBlue / SCR filters



- Highly precise and secure filter screens in a wide range of pore sizes
- Excellent thermal and chemical resistance
- Best possible flow rate
- Customer-specific colors
- Best processability
- SEFAR NITEX (PA), SEFAR PEEKTEX (PEEK) screens

## Filters for hydraulic systems

For hydraulic brake filters, transmission filters, power steering filters and hydraulic cartridge systems:



- Highly precise and secure filter screens in a wide range of pore sizes
- Excellent thermal and chemical resistance

### Sefar SA de CV

Carretera Tepotzotlán la Aurora Km .1  
Nave 3 Módulo "A" S/Número  
Col: Axotlán  
Cuautitlán Izcalli, Edo de México  
C.P. 54719

Phone +52 55 5899 6100  
Fax +52 55 5899 6129

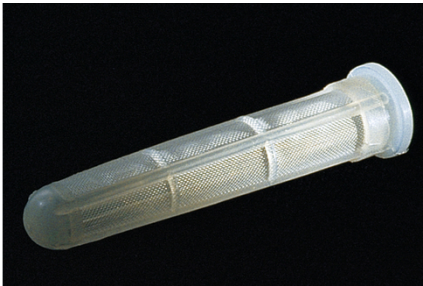
[info.mexico@sefar.com](mailto:info.mexico@sefar.com)

[Go to product page](#)

- Best possible flow rate
- SEFAR NITEX (PA), SEFAR PETEX (PET) and SEFAR PEEKTEX (PEEK) screens
- Customer-specific colors in PA and PET
- Best processability

### Filters for the water system

We provide products for windshield wipers and water reservoirs:



- Highly precise and secure filter screens in a wide range of pore size
- Excellent thermal and chemical resistance
- Best possible flow rate
- SEFAR NITEX (PA), SEFAR PROPYLTEX (PP) screens
- Customer-specific colors in PA
- Best processability

#### **Sefar SA de CV**

Carretera Tepetzotlán la Aurora Km .1  
Nave 3 Módulo "A" S/Número  
Col: Axotlán  
Cuautitlán Izcalli, Edo de México  
C.P. 54719

Phone +52 55 5899 6100  
Fax +52 55 5899 6129

[info.mexico@sefar.com](mailto:info.mexico@sefar.com)

[Go to product page](#)

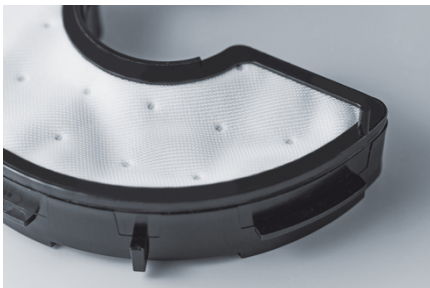
### In-tank fuel pump filter and in-tank diesel filter



- High mechanical and chemical stability
- High capacity on defined particle size
- Best processability
- SEFAR ACCUFLOW, SEFAR TETEX MONO, SEFAR NITEX

### AdBlue / SCR / DEF- Filters and sensor filters

Products to protect the AdBlue pump module, injection system and sensors in diesel exhaust conditioning.



- High mechanical and chemical stability
- High capacity on defined particle size
- Best processability
- SEFAR ACCUFLOW, SEFAR TETEX

#### Sefar SA de CV

Carretera Tepotzotlán la Aurora Km .1  
Nave 3 Módulo "A" S/Número  
Col: Axotlán  
Cuautitlán Izcalli, Edo de México  
C.P. 54719

Phone +52 55 5899 6100  
Fax +52 55 5899 6129

[info.mexico@sefar.com](mailto:info.mexico@sefar.com)

[Go to product page](#)

---

- MONO, SEFAR NITEX

---

### Transmission, gear oil filtration

Suction and pressure filters manufactured using our open mesh fabrics combined with a wide range of depth media provide the ultimate filtration protection.



- Customer-specific solutions
- Combination of non-woven and woven fabric
- Open mesh for pleated elements
- Open mesh for last chance filtration

---

### Diesel water separation

SEFAR ACCUFLOW is the top choice for coalescing, while an open mesh filter with a special hydrophobic treatment is best for water separation.

- SEFAR ACCUFLOW depth media for coalescing

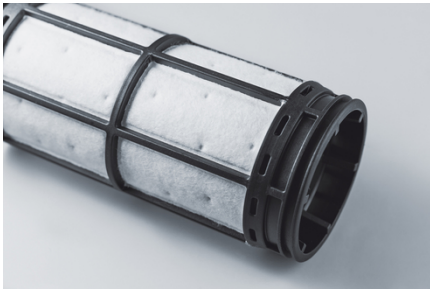
#### Sefar SA de CV

Carretera Tepetzotlán la Aurora Km .1  
Nave 3 Módulo "A" S/Número  
Col: Axotlán  
Cuautitlán Izcalli, Edo de México  
C.P. 54719

Phone +52 55 5899 6100  
Fax +52 55 5899 6129

[info.mexico@sefar.com](mailto:info.mexico@sefar.com)

[Go to product page](#)



- SEFAR PETEX (PET), SEFAR NITEX (PA) hydrophobic range for water separation
- In-house media testing (based on ISO 16332)



#### IATF 16949 Automotive

Sefar's manufacturing system is geared towards providing lot-to-lot repeatability for critical parameters. This consistent quality allows automotive injection molders and filter element manufacturers to easily incorporate Sefar products into their manufacturing processes.

## Your Benefits

### Inherent material properties

- Good replacement for metal filters (thermal and chemical resistance)
- Easily molded (handling properties of synthetic fiber vs. wire)

#### Sefar SA de CV

Carretera Tepetzotlán la Aurora Km .1  
 Nave 3 Módulo "A" S/Número  
 Col: Axotlán  
 Cuautitlán Izcalli, Edo de México  
 C.P. 54719

Phone +52 55 5899 6100  
 Fax +52 55 5899 6129

[info.mexico@sefar.com](mailto:info.mexico@sefar.com)

[Go to product page](#)

- 
- Consistent quality (IATF 16949)
  - Useable in extreme temperature ranges and chemically aggressive environments  
(PEEK fabrics)
  - Variety of conversion configurations
- 

### Open mesh fabrics

- Exact and repeatable screening properties (high precision mesh opening)
  - High flow rates (low pressure drop, maximized open area by use of fiber down to 24µm)
  - Adjustable hydrophobic levels, ranging from 100 to 135 degree contact angle  
(surface modification)
  - Maximum technical range (materials, diameters and weaving patterns)
- 

### Closed mesh fabrics

- Highly efficient particle retention (closed mesh)
  - Optimized flow rates
  - Cleanliness (smooth surface)
- 

#### Sefar SA de CV

Carretera Tepetzotlán la Aurora Km .1  
Nave 3 Módulo "A" S/Número  
Col: Axotlán  
Cuautitlán Izcalli, Edo de México  
C.P. 54719

Phone +52 55 5899 6100  
Fax +52 55 5899 6129

[info.mexico@sefar.com](mailto:info.mexico@sefar.com)

[Go to product page](#)

## Depth filter material

- Lower power consumption and minimal space requirement (low pressure drop)
- Protects pump systems (high particle retention capacity)
- Useable with all fuels and most liquids (elevated temperature fuel tests)
- Excellent bonding uniformity (latest ultrasonic bonding technology)
- Depth filter material for high capacity (60 µm material) applications
- Depth filter material for high efficiency (30 µm material) applications
- Proven test results for flat or converted materials (external approved test labs)
- Available as roll goods or ribbons for injection molders

## Locations



### Sefar SA de CV

Carretera Tepotzotlán la Aurora Km  
.1  
Nave 3 Módulo "A" S/Número  
Col: Axotlán  
Cuautitlán Izcalli, Edo de México  
C.P. 54719  
Phone: +52 55 5899 6100  
Fax: +52 55 5899 6129

■ E-Mail



### Sefar SA de CV

Serigrafía  
Antonio I. Villarreal N° 2323 Norte  
Col. Moderna  
Monterrey, Nuevo León  
C.P. 64530  
Phone: +52 81 8345 8164  
Fax:

■ E-Mail

### Sefar SA de CV

Carretera Tepotzotlán la Aurora Km .1  
Nave 3 Módulo "A" S/Número  
Col: Axotlán  
Cuautitlán Izcalli, Edo de México  
C.P. 54719

Phone +52 55 5899 6100  
Fax +52 55 5899 6129

[info.mexico@sefar.com](mailto:info.mexico@sefar.com)

[Go to product page](#)